

# Anthelion Systems, Inc.

## Nano 2 X 16 LCD Display

The next generation of low cost, high performance, data acquisition products are now available with Anthelion Systems. The Nano series will solve your companies cost and performance dilemmas.

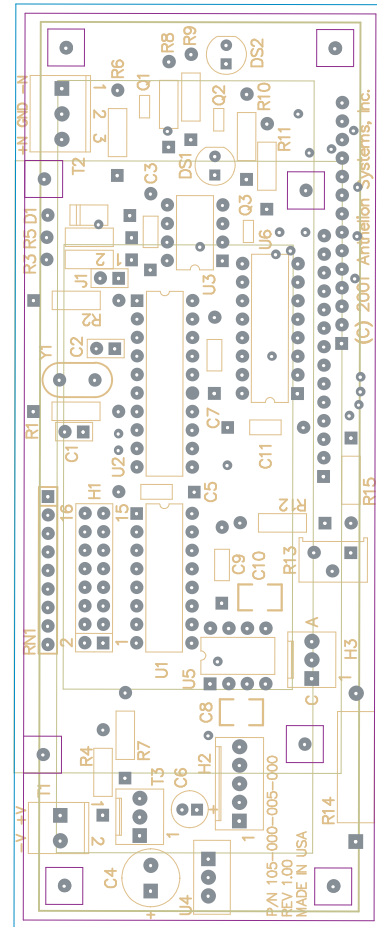
The Nano series LCD display card is a smart subsystem. It has 2 lines of 16 characters each.

The microprocessor will process the incoming request. If there is new data to be displayed, the Nano series will display it. The LCD card can handle addresses from 1 to 128.

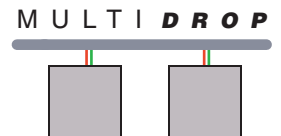
Our "smart" devices utilize the latest technology in Micro controllers. They provide a great balance between price and performance. The cards were designed to withstand harsh environments with the result being outstanding durability, reliability and accuracy. They utilize the standard ModBus binary protocols for communication and to allow for their data to be retrieved by standard off the shelf Data Acquisition Software.

The Nano card is a ModBus device, with an RS485 port, all communication is done through the RS485. The controller card has an on board Watchdog Timer and Brown Out protection, this system is low power and high performance.

A low power industrial PC is also available to scan the controller cards and archive the data based upon user configuration. Please contact Anthelion Systems for a solution to fit your companies growing needs.



Operating temperature: -20 to 70° C  
Size: 2" X 5"  
Power: +6 to 24 VDC. Reverse Protected.  
Communication: 2 wire RS485.  
LCD: Extended Temperature.



LOW COST HIGH PERFORMANCE DISTRIBUTED SYSTEM SOLUTION.

Anthelion Systems, Inc.



2825 Wilcrest, Suite 550  
Houston, Texas 77042  
Voice: 713-339-4455  
www.anthelion.com  
support@anthelion.com